



The Power of Technology

Price List



AT A GLANCE

- PARIN PUMPS is a professionally managed firm, manufacturing submersible pumps for Agriculture, Domestic and Industrial purpose.
- We manufacture pumps with a superior quality and effort of constant improvement to achieve highest efficiency in our products.
- Customer satisfaction is the tendency of firm therefore we provide Quality Products with competitive rates and timely delivery.
- Parin Pumps has covered wide market in India.

OBJECTIVES AND VISION

- To ensure customer satisfaction by manufacturing and supplying quality products.
- To ensure employee welfare and development by constant interaction.
- For us business means best service, customer satisfaction and life long relationship.
- Listening to customer and his needs is a tradition for us.
- Our company always keeps to the principle of equality, reciprocity, variety, co-development and mangement policy.
- Keeping small profits and respecting personal loyalty.
- To enhance the quality of our product and service we fully support continuas upgradation of our systems, process and technology.



INDEX

Sr. No.	Content	Page No.
01	V3 Pumpsets Performance and Price	03
02	V4 Single Phase Pumpsets Performance and Price	04
03	V3 & V4 Single Phase Panel Board Details	05
04	V4 Three Phase Pumpsets Performance and Price	06
05	V6 Radial Flow Pumps Performance	09
06	V6 Mix Flow Pumps Performance	12
07	V6 Price	14
08	Horizontal Openwell Performance and Price	19
09	Cable Selection Chart	20
10	Open Pipe Water Flow Measurement	21

PRODUCT RANGE

Sr. No.	Category	HP Range	Max OD	Suitable Bore Size	Hd Range (MTRS)	Dis. Range (LPM)
01	V3	0.5 to 1.5	74 mm	100 mm & above	12 to 80	70 to 20
02	V4	0.5 to 5.0	97 mm	100 mm & above	15 to 200	350 to 25
03	V6	3.0 to 25.0	142 mm	150 mm & above	20 to 400	1000 to 50
04	Horizontal Openwell	0.5 to 10.0	-	-	10 to 50	1300 to 25

NOTE

- Performance data given in performance chart are at rated voltage, single phase 220 V and three phase 415 V. and 50 Hz.
- Fluctuation in voltage, frequency loss, band in pipe line can reduced performance.
- Voltage range of single phase pumps is 240 V to 160 V.
- Voltage range of three phase pumps is 440 V to 300 V.
- Select proper model in order to get best result at site by calculating total head, voltage at site and requirement of water (LPM)
- Use standard panel board and set relay at proper range.
- Select proper cable size by using cable selection chart.

CONVERSION

Power	Discharge	Head
<ul style="list-style-type: none"> • 1 HP = 0.75 kW • 1 KW = 1000 watts 	<ul style="list-style-type: none"> • 1 GPM (US) = 3.785 LPM • 1 GPM (UK) = 4.546 LPM 	<ul style="list-style-type: none"> • 1 Mtr = 3.28 Feet • 1 Kg / Cm² = 10 Mtr HEAD

V3 & V4 PUMPSETS

APPLICATION

- Domestic water supply.
- Drip irrigation, sprinkler and gardening.
- Fountains, cooling water circulations.
- Landscaping, service stations.
- Booster applications.

SILENT FEATURES

- Corrosion resistant stainless steel body.
- High electrical and mechanical efficiency.
- Dynamically balanced rotor and other rotating parts for uniform clearance.
- Specially designed bearing to withstand axial thrust loads.
- High efficiency, Low power consumption.



BASIC CONSTRUCTION

Sr.	Particulars	Materials
01	Motor Casing	Stainless steel - 202 Grade
02	Bushings	Leaded bronze LTB4 Grade
03	Motor shaft	Stainless Steel 410 & 431 Grade
04	Thrust Bearing	Stainless Steel / Carbon / Teflon
05	Housing/Base/Suction/NRV	Cast iron FG 200 Grade
06	Stamping	CRNGO / CRC Prime
07	Screws / Studs	Stainless Steel
08	Bowlets	Stainless steel / Noryl GNF2 Grade
09	Pumps Shaft	Stainless steel 410 Grade

V-4

V-3



V3 SINGLE PHASE PUMPSETS (74 MM OD)

FOR 80 MM BORE

PUMP TYPE : K - 2

OUTLET : 25 MM

Sr. No.	Model No.	HP	Stage	Head in Meters	Discharge in LPM							
					10	15	20	25	30	35	40	45
01	PSV-30201	0.50	10		37	34	32	28	24	20	14	9
02	PSV-30202	0.75	15		54	50	47	41	36	30	21	13
03	PSV-30203	1.00	20		73	67	63	55	47	39	27	17
04	PSV-30204	1.50	26		95	88	83	72	62	51	36	23

PUMP TYPE : K - 4

OUTLET : 25 MM

Sr. No.	Model No.	HP	Stage	Head in Meters	Discharge in LPM							
					18	23	28	33	38	43	48	53
05	PSV-30401	0.50	08		28	26	24	22	19	16	13	10
06	PSV-30402	0.75	12		43	40	37	33	28	23	19	14
07	PSV-30403	1.00	15		54	50	46	41	35	29	24	18
08	PSV-30404	1.50	20		72	66	61	55	46	38	32	24

PUMP TYPE : K - 5

OUTLET : 25 MM

Sr. No.	Model No.	HP	Stage	Head in Meters	Discharge in LPM							
					25	30	35	40	45	50	55	60
09	PSV-30501	0.50	07		28	26	24	22	19	16	13	10
10	PSV-30502	0.75	10		43	40	37	33	28	23	19	14
11	PSV-30503	1.00	13		54	50	46	41	35	29	24	18
12	PSV-30504	1.50	15		72	66	61	55	46	38	32	24

SPECIAL 68 MM PUMP OD

FOR 75 MM BORE

PUMP TYPE : K - 7

OUTLET : 32 MM

Sr. No.	Model No.	HP	Stage	Head in Meters	Discharge in LPM							
					30	35	40	45	50	55	60	65
13	PSV-30701	0.50	09		26	24	22	20	18	16	14	12
14	PSV-30702	0.75	12		36	33	30	27	25	22	20	17
15	PSV-30703	1.00	16		48	44	40	36	33	30	26	23
16	PSV-30704	1.50	20		59	55	50	45	41	37	32	27

PUMP TYPE : K - 10

OUTLET : 32 MM

Sr. no.	Model No.	HP	Stage	Head in Meters	Discharge in LPM							
					40	45	50	55	60	65	70	75
17	PSV-31001	0.50	06		20	18	16	14	12	10	8	6
18	PSV-31002	0.75	09		27	25	23	21	19	17	15	13
19	PSV-31003	1.00	12		36	33	30	27	25	22	20	17
20	PSV-31004	1.50	15		49	44	39	34	30	25	20	15

V4 SINGLE PHASE PUMPSETS (97 MM OD)

FOR 100 MM BORE

PUMP TYPE : K - 1

OUTLET : 25 MM

Sr. No.	Model No.	HP	Stage	Head in Meters	Discharge in LPM							
					20	25	30	35	40	45	50	55
01	PSV-40101	0.50	10		51	48	44	40	35	29	24	19
02	PSV-40102	0.75	13		66	62	57	52	46	38	31	25
03	PSV-40103	0.75	15		77	72	66	60	54	45	36	29
04	PSV-40104	1.00	16		81	77	70	64	56	46	38	30
05	PSV-40105	1.00	18		92	86	79	72	63	52	43	34
06	PSV-40106	1.50	22		112	106	97	88	77	64	53	42
07	PSV-40107	1.50	25		128	120	110	100	88	73	60	48
08	PSV-40108	2.00	28		143	134	123	112	98	81	67	53
09	PSV-40109	2.00	30		153	144	132	120	105	87	72	57
10	PSV-40110	3.00	35		178	168	154	140	123	102	84	66

PUMP TYPE : K - 2

OUTLET : 32 MM

Sr. no.	model no.	HP	Stage	Head in Meters	Discharge in LPM							
					30	35	40	45	50	55	60	65
11	PSV-40201	0.50	07		39	36	32	28	24	20	16	12
12	PSV-40202	0.75	10		56	51	45	40	35	29	24	19
13	PSV-40203	0.75	12		67	61	54	48	42	35	29	22
14	PSV-40204	1.00	13		73	66	59	52	45	38	31	24
15	PSV-40205	1.00	15		84	76	68	60	52	44	36	28
16	PSV-40206	1.50	20		112	101	91	80	69	58	48	37
17	PSV-40207	2.00	25		140	127	113	100	86	73	60	46
18	PSV-40208	3.00	30		168	152	136	120	104	88	72	56

PUMP TYPE : K - 4

OUTLET : 32 MM

Sr. No.	Model No.	HP	Stage	Head in Meters	Discharge in LPM							
					30	40	50	60	70	80	90	100
19	PSV-40401	0.50	05		28	26	23	20	18	15	13	10
20	PSV-40402	0.75	08		44	41	37	32	28	24	20	16
21	PSV-40403	1.00	10		55	51	46	40	35	30	25	20
22	PSV-40404	1.50	15		82	77	69	60	53	45	38	30
23	PSV-40405	2.00	20		110	102	92	80	70	60	50	40
24	PSV-40406	3.00	25		138	128	115	100	88	75	63	50

PUMP TYPE : K - 5

OUTLET : 40 MM

Sr. No.	Model No.	HP	Stage	Head in Meters	Discharge in LPM							
					50	60	70	80	90	100	110	120
25	PSV-40501	1.00	08		41	38	35	32	28	25	21	17
26	PSV-40502	1.50	12		61	57	53	48	42	37	31	26
27	PSV-40503	2.00	15		76	71	66	60	53	46	39	32
28	PSV-40504	3.00	20		101	95	88	80	71	61	52	43



The Power of Technology

V4 SINGLE PHASE PUMPSETS (97 MM OD)

FOR 100 MM BORE

PUMP TYPE : K - 7

OUTLET : 40 MM

Sr. No.	Model No.	HP	Stage	Head in Meters	Discharge in LPM							
					70	80	90	100	110	120	130	140
29	PSV-40701	1.00	07		36	33	31	28	25	22	20	17
30	PSV-40702	1.50	10		51	48	44	40	36	32	28	24
31	PSV-40703	2.00	14		72	67	62	56	50	45	39	34
32	PSV-40704	3.00	18		92	86	79	72	65	58	50	43

PUMP TYPE : K - 10

OUTLET : 50 MM

Sr. No.	Model No.	HP	Stage	Head in Meters	Discharge in LPM							
					75	90	105	120	135	150	165	180
33	PSV-41001	1.00	06		32	30	27	24	21	18	14	9
34	PSV-41002	1.50	08		43	40	36	32	28	24	18	12
35	PSV-41003	2.00	10		54	50	45	40	35	30	23	15
36	PSV-41004	3.00	15		81	75	68	60	53	45	35	23

PUMP TYPE : K - 12

OUTLET : 50 MM

Sr. No.	Model No.	HP	Stage	Head in Meters	Discharge in LPM							
					80	100	120	140	160	180	200	220
37	PSV-41201	1.00	05		29	26	23	20	17	13	7	3
38	PSV-41202	1.50	07		40	36	32	28	23	19	9	5
39	PSV-41203	2.00	08		52	47	41	32	30	24	12	6
40	PSV-41204	3.00	12		69	62	55	48	40	32	16	8

PUMP TYPE : K - 18 MIX FLOW

OUTLET : 50 MM

Sr. No.	Model No.	HP	Stage	Head in Meters	Discharge in LPM							
					165	190	215	240	265	290	315	340
41	PSV-41801	1.50	06		23	21	20	18	17	15	14	12
42	PSV-41802	2.00	07		30	28	26	24	22	20	18	15
43	PSV-41803	3.00	10		38	35	33	30	28	25	23	19

PANEL DETAILS FOR V3 & V4 SINGLE PHASE PUMPSETS

Sr. No.	HP	Start Capacitor (MFD)	Run Capacitor (MFD)		
			240 to 210 V	210 to 180 V	180 to 150 V
01	0.50	80 - 100	36	45	50
02	0.75	80 - 100	36	45	50
03	1.00	100 - 120	50	60	36 + 36
04	1.50	120 - 150	36 + 25	36 + 36	50 + 36
05	2.00	150 - 200	36 + 36	45 + 36	45 + 45
06	3.00	200 - 250	36 + 36 + 36	50 + 36 + 36	45 + 45 + 45



The Power of Technology

V4 THREE PHASE PUMPSETS (97 MM OD)

FOR 100 MM BORE

PUMP TYPE : K - 1 **OUTLET : 25 MM**

Sr. No.	Model No.	HP	Stage		Discharge in LPM							
					20	25	30	35	40	45	50	55
44	PTV-40111	1.00	16		81	77	70	64	56	46	38	30
45	PTV-40112	1.00	18		92	86	79	72	63	52	43	34
46	PTV-40113	1.50	22	Head in Meters	112	106	97	88	77	64	53	42
47	PTV-40114	1.50	25		128	120	110	100	88	73	60	48
48	PTV-40115	2.00	28		143	134	123	112	98	81	67	53
49	PTV-40116	2.00	30		153	144	132	120	105	87	72	57
50	PTV-40117	3.00	35		178	168	154	140	123	102	84	66

PUMP TYPE : K - 2 **OUTLET : 32 MM**

Sr. No.	Model No.	HP	Stage		Discharge in LPM							
					30	35	40	45	50	55	60	65
51	PTV-40209	1.00	13		73	66	59	52	45	38	31	24
52	PTV-40210	1.00	15		84	76	68	60	52	44	36	28
53	PTV-40211	1.50	20	Head in Meters	112	101	91	80	69	58	48	37
54	PTV-40212	2.00	25		140	127	113	100	86	73	60	46
55	PTV-40213	3.00	30		168	152	136	120	104	88	72	56
56	PTV-40214	5.00	40		224	203	181	160	139	117	96	75

PUMP TYPE : K - 4 **OUTLET : 32 MM**

Sr. No.	Model No.	HP	Stage		Discharge in LPM							
					30	40	50	60	70	80	90	100
57	PTV-40407	1.00	10		55	51	46	40	35	30	25	20
58	PTV-40408	1.50	15		82	77	69	60	53	45	38	30
59	PTV-40409	2.00	20	Head in Meters	110	102	92	80	70	60	50	40
60	PTV-40410	3.00	25		138	128	115	100	88	75	63	50
61	PTV-40411	5.00	35		193	179	161	140	123	105	88	70

PUMP TYPE : K - 5 **OUTLET : 40 MM**

Sr. No.	Model No.	HP	Stage		Discharge in LPM							
					50	60	70	80	90	100	110	120
62	PTV-40505	1.00	08		41	38	35	32	28	25	21	17
63	PTV-40506	1.50	12		61	57	53	48	42	37	31	26
64	PTV-40507	2.00	15	Head in Meters	76	71	66	60	53	46	39	32
65	PTV-40508	3.00	20		101	95	88	80	71	61	52	43
66	PTV-40509	5.00	30		152	143	132	120	107	92	78	65

V4 THREE PHASE PUMPSETS (97 MM OD)

FOR 100 MM BORE

PUMP TYPE : K - 7

OUTLET : 40 MM

Sr. No.	Model No.	HP	Stage		Discharge in LPM							
					70	80	90	100	110	120	130	140
67	PTV-40705	1.00	07		36	33	31	28	25	22	20	17
68	PTV-40706	1.50	10	Head in Meters	51	48	44	40	36	32	28	24
69	PTV-40707	2.00	14		72	67	62	56	50	45	39	34
70	PTV-40708	3.00	18		92	86	79	72	65	58	50	43
71	PTV-40709	5.00	25		128	119	110	100	90	80	70	60

PUMP TYPE : K - 10

OUTLET : 50 MM

Sr. No.	Model No.	HP	Stage		Discharge in LPM								Price Rs.
					75	90	105	120	135	150	165	180	
72	PTV-41005	1.00	06		32	30	27	24	21	18	14	9	
73	PTV-41006	1.50	08	Head in Meters	43	40	36	32	28	24	18	12	
74	PTV-41007	2.00	10		54	50	45	40	35	30	23	15	
75	PTV-41008	3.00	15		81	75	68	60	53	45	35	23	
76	PTV-41009	5.00	20		108	100	90	80	70	60	46	30	

PUMP TYPE : K - 12

OUTLET : 50 MM

Sr. No.	Model No.	HP	Stage		Discharge in LPM							
					80	100	120	140	160	180	200	220
77	PTV-41205	1.00	05		29	26	23	20	17	13	7	3
78	PTV-41206	1.50	07		40	36	32	28	23	19	9	5
79	PTV-41207	2.00	08		52	47	41	32	30	24	12	6
80	PTV-41208	3.00	12		69	62	55	48	40	32	16	8
81	PTV-41209	5.00	15		86	78	69	60	50	40	20	10

PUMP TYPE : K - 18 MIX FLOW

OUTLET : 50 MM

Sr. No.	Model No.	HP	Stage		Discharge in LPM							
					165	190	215	240	265	290	315	340
82	PTV-41804	1.50	06		23	21	20	18	17	15	14	12
83	PTV-41805	2.00	07	Head in Meters	30	28	26	24	22	20	18	15
84	PTV-41806	3.00	10		38	35	33	30	28	25	23	19
85	PTV-41807	5.00	12		45	42	39	36	33	30	27	23

Save energy Save resources Preserve life on earth

V6 PUMPSETS

APPLICATION

- Domestic and community water supply.
- Industrial and agriculture water supply.
- Drip irrigation, sprinkler and gardening.
- Landscaping, Fountains and service stations.
- Booster applications.

SILENT FEATURES

- Corrosion resistant stainless steel body.
- Dynamically balanced rotor and other rotating parts for uniform clearance.
- Specially designed bearing to withstand axial thrust loads.
- High efficiency, low power consumption.
- 50 feet head per stage
- Supporting bush in each bowl.



BASIC CONSTRUCTION

Sr.	Particulars	Materials
01	Motor Casing	Stainless steel - 202 Grade
02	Bushings	Leaded bronze LTB4 Grade
03	Motor shaft	Stainless Steel 410 & 431 Grade
04	Thrust Bearing	Stainless Steel / Carbon / Teflon / Loose Segment
05	Housing/Base/Conn. Piece/Suction/NRV	Cast iron FG 200 Grade
06	Stamping	CRNGO / CRC Prime
07	Screws / Studs	Stainless Steel
08	Bowllets	Stainless steel / Nylon / CI
09	Pumps Shaft	Stainless steel 410 & 431 Grade

K - Type



Q - Type



V - 6

V6 THREE PHASE RADIAL FLOW PUMPSETS (142 MM OD)

FOR 150 MM BORE

PUMP TYPE : K-50

OUTLET : 50 MM

Sr. No.	Model No.	HP	Stage	Head in Meters	Disc arge in LPM							
					55	70	85	100	125	150	175	200
01	PKV-60501	3.00	06		84	81	77	72	64	52	36	16
02	PKV-60502	4.00	08		112	108	103	96	85	69	48	21
03	PKV-60503	5.00	10		140	13	142	120	107	87	60	27
04	PKV-60504	6.00	12		168	162	154	144	128	104	72	32
05	PKV-60505	7.50	15		210	203	193	180	160	130	90	40
06	PKV-60506	10.0	20		280	270	257	240	213	173	120	53
07	PKV-60507	12.5	25		350	338	321	300	267	217	150	67

PUMP TYPE : K-60

OUTLET : 50 MM

Sr. No.	Model No.	HP	Stage	Head in Meters	Disc arge in LPM							
					90	110	130	150	180	210	240	270
08	PKV-60601	3.00	05		70	67	64	60	53	43	30	13
09	PKV-60602	4.00	07		98	95	90	84	75	61	42	19
10	PKV-60603	5.00	08		112	108	103	96	85	69	48	21
11	PKV-60604	6.00	10		140	135	128	120	107	87	60	27
12	PKV-60605	7.50	12		168	162	154	144	128	104	72	32
13	PKV-60606	10.0	16		224	216	205	192	171	139	96	43
14	PKV-60607	12.5	20		280	270	257	240	213	173	120	53
15	PKV-60608	15.0	24		336	324	308	288	256	208	144	64

PUMP TYPE : K-80

OUTLET : 50 MM

Sr. No.	Model No.	HP	Stage	Head in Meters	Disc arge in LPM							
					125	150	175	200	235	270	305	340
16	PKV-60801	3.00	04		56	54	51	48	43	35	24	11
17	PKV-60802	4.00	05		70	67	64	60	53	43	30	13
18	PKV-60803	5.00	06		84	81	77	72	64	52	36	16
19	PKV-60804	6.00	08		112	108	103	96	85	69	48	21
20	PKV-60805	7.50	10		140	135	129	120	106	86	60	26
21	PKV-60806	10.0	12		168	162	155	144	128	104	72	32
22	PKV-60807	12.5	15		210	203	193	180	160	130	90	40
23	PKV-60808	15.0	18		252	243	231	216	192	156	108	48
24	PKV-60809	17.5	21		308	297	282	264	235	191	132	32
25	PKV-60810	20.0	24		336	324	310	288	254	206	144	62

It won't take much energy to coserve energy

V6 THREE PHASE RADIAL FLOW PUMPSETS (142 MM OD)

FOR 150 MM BORE

PUMP TYPE : K - 100

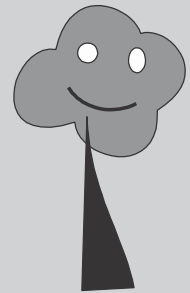
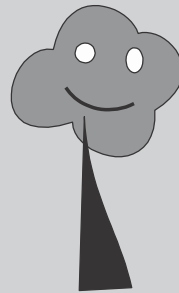
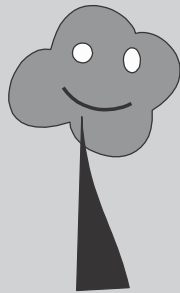
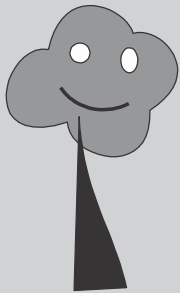
OUTLET : 50 MM

Sr. No.	Model No.	HP	Stage		Discharge in LPM							
					160	190	220	250	290	330	370	410
26	PKV-61001	3.00	03		42	40	38	36	32	26	18	8
27	PKV-61002	4.00	04		56	54	51	48	43	35	24	11
28	PKV-61003	5.00	05		70	67	64	60	53	43	30	13
29	PKV-61004	6.00	06		84	81	77	72	64	52	36	16
30	PKV-61005	7.50	08		112	108	103	96	85	69	48	21
31	PKV-61006	10.0	10	Head in Meters	140	135	129	120	106	86	60	26
32	PKV-61007	12.5	12		168	162	155	144	128	104	72	32
33	PKV-61008	15.0	15		210	203	193	180	160	130	90	40
34	PKV-61009	17.5	18		252	243	231	216	192	156	108	48
35	PKV-61010	20.0	20		280	270	257	240	213	173	120	53
36	PKV-61011	22.5	22		308	297	282	264	235	191	132	59
37	PKV-61012	25.0	25		350	338	321	300	267	217	150	67

PUMP TYPE : K - 125

OUTLET : 65 MM

Sr. No.	Model No.	HP	Stage		Discharge in LPM							
					195	230	265	300	345	390	435	480
38	PKV-61201	4.00	03		42	40	38	36	32	26	18	8
39	PKV-61202	5.00	04		56	54	51	48	43	35	24	11
40	PKV-61203	6.00	05		70	67	64	60	53	43	30	13
41	PKV-61204	7.50	06		84	81	77	72	64	52	36	16
42	PKV-61205	10.0	08	Head in Meters	112	108	103	96	85	69	48	21
43	PKV-61206	12.5	10		140	135	129	120	106	86	60	26
44	PKV-61207	15.0	12		168	162	155	144	128	104	72	32
45	PKV-61208	17.5	14		196	189	180	168	149	121	84	37
46	PKV-61209	20.0	16		224	216	205	192	171	139	96	43
47	PKV-61210	22.5	18		252	243	231	216	192	156	108	48
48	PKV-61211	25.0	20		280	270	257	240	213	173	120	53



Think before you print

PUMP TYPE : K - 150

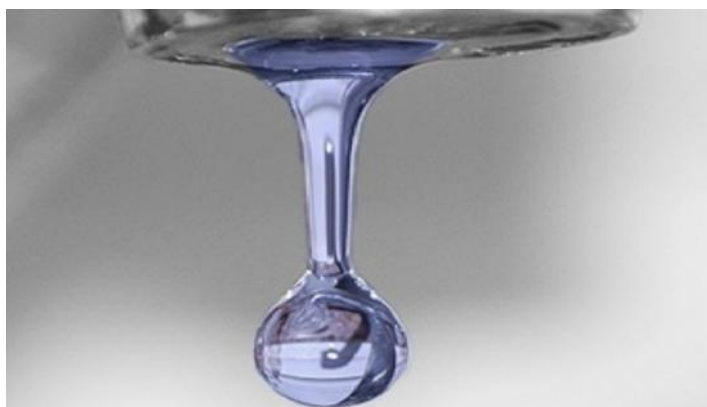
OUTLET : 65 MM

Sr. No.	Model No.	HP	Stage		Discharge in LIM							
					280	320	360	400	450	500	550	600
49	PKV-61501	3.00	02		28	27	26	24	21	17	12	5
50	PKV-61502	5.00	03		42	40	38	36	32	26	18	8
51	PKV-61503	6.00	04		56	54	51	48	43	35	24	11
52	PKV-61504	7.50	05		70	67	64	60	53	43	30	13
53	PKV-61505	10.0	07	Head in Meters	98	95	90	84	75	61	42	19
54	PKV-61506	12.5	08		112	108	103	96	85	69	48	21
55	PKV-61507	15.0	10		140	135	129	120	106	86	60	26
56	PKV-61508	17.5	12		168	162	155	144	128	104	72	32
57	PKV-61509	20.0	13		182	176	167	156	139	113	78	35
58	PKV-61510	22.5	15		210	203	193	180	160	130	90	40
59	PKV-61511	25.0	16	224	216	206	192	170	138	96	42	

PUMP TYPE : K - 200

OUTLET : 65 MM

Sr. No.	Model No.	HP	Stage		Discharge in LIM							
					365	410	455	500	560	620	680	740
60	PKV-62001	4.00	02		28	27	26	24	21	17	12	5
61	PKV-62002	6.00	03		42	40	38	36	32	26	18	8
62	PKV-62003	7.50	04		56	54	51	48	43	35	24	11
63	PKV-62004	10.0	05		70	67	64	60	53	43	30	13
64	PKV-62005	12.5	06		84	81	77	72	64	52	36	16
65	PKV-62006	15.0	08		112	108	103	96	85	69	48	21
66	PKV-62007	17.5	09		126	122	115	108	96	78	54	24
67	PKV-62008	20.0	10		140	135	129	120	106	86	60	26
68	PKV-62009	22.5	11		154	149	141	132	117	95	66	29
69	PKV-62010	25.0	12		168	162	155	144	128	104	72	32



Save Water

Water ! The source of life.... Save water to save lives...
Small drops make the ocean. Do your bit !!!

Save Water Save Life !!!

V6 THREE PHASE MIX FLOW PUMPSETS (142 MM OD)

FOR 150 MM BORE

PUMP TYPE : Q - 100

OUTLET : 65 MM

Sr. No.	Model No.	HP	Stage	Head in Meters	Discharge in LRM							
					160	230	300	370	450	530	610	690
70	PQV-61013	3.00	03		31	29	26	23	18	14	9	4
71	PQV-61014	4.00	04		41	38	34	30	24	18	12	5
72	PQV-61015	5.00	05		51	48	43	38	30	23	15	6
73	PQV-61016	6.00	06		61	57	51	45	36	27	18	8
74	PQV-61017	7.50	08		82	76	68	60	48	36	24	10
75	PQV-61018	10.0	10		102	95	85	75	60	45	30	13
76	PQV-61019	12.5	12		122	114	102	90	72	54	36	15
77	PQV-61020	15.0	15		153	143	128	113	90	68	45	19

PUMP TYPE : Q - 125

OUTLET : 65 MM

Sr. No.	Model No.	HP	Stage	Head in Meters	Discharge in LRM							
					240	320	400	480	570	660	750	840
78	PQV-61212	4.00	03		31	29	26	23	18	14	9	4
79	PQV-61213	5.00	04		41	38	34	30	24	18	12	5
80	PQV-61214	6.00	05		51	48	43	38	30	23	15	6
81	PQV-61215	7.50	06		61	57	51	45	36	27	18	8
82	PQV-61216	10.0	08		82	76	68	60	48	36	24	10
83	PQV-61217	12.5	10		102	95	85	75	60	45	30	13
84	PQV-61218	15.0	12		122	114	102	90	72	54	36	15
85	PQV-61219	17.5	14		143	133	119	105	84	63	42	18
86	PQV-61220	20.0	16		163	152	136	120	96	72	48	20

PUMP TYPE : Q - 150

OUTLET : 80 MM

Sr. No.	Model No.	HP	Stage	Head in Meters	Discharge in LRM							
					330	420	510	600	700	800	900	1000
87	PQV-61512	3.00	02		20	19	17	15	12	9	6	3
88	PQV-61513	5.00	03		31	29	26	23	18	14	9	4
89	PQV-61514	6.00	04		41	38	34	30	24	18	12	5
90	PQV-61515	7.50	05		51	48	43	38	30	23	15	6
91	PQV-61516	10.0	07		71	67	60	53	42	32	21	9
92	PQV-61517	12.5	08		82	76	68	60	48	36	24	10
93	PQV-61518	15.0	10		102	95	85	75	60	45	30	13
94	PQV-61519	17.5	12		122	114	102	90	72	54	36	15
95	PQV-61520	20.0	13		133	124	111	98	78	59	39	16
96	PQV-61521	22.5	15		153	143	128	113	90	68	45	19

V6 THREE PHASE MIX FLOW PUMPSETS (142 MM OD)

FOR 150 MM BORE

PUMP TYPE : Q - 200

OUTLET : 80 MM

Sr. No.	Model No.	HP	Stage	Head in Meters	Discharge in LPM							
					450	550	650	750	860	970	1080	1190
97	PQV-62011	4.00	02		20	19	17	15	12	9	6	3
98	PQV-62012	6.00	03		31	29	26	23	18	14	9	4
99	PQV-62013	7.50	04		41	38	34	30	24	18	12	5
100	PQV-62014	10.0	05		51	48	43	38	30	23	15	6
101	PQV-62015	12.5	06		61	57	51	45	36	27	18	8
102	PQV-62016	15.0	08		82	76	68	60	48	36	24	10
103	PQV-62017	17.5	09		92	86	77	68	54	41	27	11
104	PQV-62018	20.0	10		102	95	85	75	60	45	30	13
105	PQV-62019	22.5	11		112	105	94	83	66	50	33	14
106	PQV-62020	25.0	12		122	114	102	90	72	54	36	15

PUMP TYPE : Q - 250

OUTLET : 80 MM

Sr. No.	Model No.	HP	Stage	Head in Meters	Discharge in LPM							
					570	680	790	900	1020	1140	1260	1380
107	PQV-62501	5.00	02		20	19	17	15	12	9	6	3
108	PQV-62502	7.50	03		31	29	26	23	18	14	9	4
109	PQV-62503	10.0	04		41	38	34	30	24	18	12	5
110	PQV-62504	12.5	05		51	48	43	38	30	23	15	6
111	PQV-62505	15.0	06		61	57	51	45	36	27	18	8
112	PQV-62506	17.5	07		71	67	60	53	42	32	21	9
113	PQV-62507	20.0	08		82	76	68	60	48	36	24	10
114	PQV-62508	22.5	09		92	86	77	68	54	41	27	11
115	PQV-62509	25.0	10		102	95	85	75	60	45	30	13

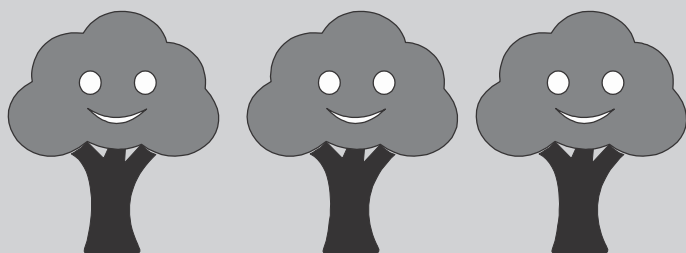


V6 PUMPS & PUMPSETS PRICE

Sr. No.	HP	Stage	Bowl No.	Price of only Pumps				Price of Pumpsets			
				Redial Flow (K Type)		Mix Flow (Q Type)		Redial Flow (K Type)		Mix Flow (Q Type)	
				SS Bowl/ SS Impe	CI Bowl/ Nyl Impe	CI Bowl/ SS Impe	CI Bowl/ Nyl Imp	SS Bowl/ SS Impe	CI Bowl/ Nyl Imp	CI Bowl/ SS Impe	CI Bowl/ Nyl Imp
01	3.00	02	150	7740	6340	5830	4740	28220	26820	26320	25220
02	3.00	03	100	8960	6860	6590	5350	29450	27350	27070	25840
03	3.00	04	80	10260	7460	-	-	30740	27940	-	-
04	3.00	05	60	11200	7700	-	-	31680	28180	-	-
05	3.00	06	50	12530	8330	-	-	33010	28810	-	-
06	3.00 HP Motor only										20480

Sr. No.	HP	Stage	Bowl No.	Price of only Pumps				Price of Pumpsets			
				Redial Flow (K Type)		Mix Flow (Q Type)		Redial Flow (K Type)		Mix Flow (Q Type)	
				SS Bowl/ SS Impe	CI Bowl/ Nyl Impe	CI Bowl/ SS Impe	CI Bowl/ Nyl Imp	SS Bowl/ SS Impe	CI Bowl/ Nyl Imp	CI Bowl/ SS Impe	CI Bowl/ Nyl Imp
07	4.00	02	200	9180	7780	5900	4800	31590	30190	28310	27210
08	4.00	03	125	9220	7120	6590	5350	31630	29530	29000	27760
09	4.00	04	100	10440	7640	7880	6410	32850	30050	30290	28820
10	4.00	05	80	11700	8200	-	-	34110	30610	-	-
11	4.00	07	60	13900	9000	-	-	36310	31410	-	-
12	4.00	08	50	15230	9630	-	-	37640	32040	-	-
13	4.00 HP Motor only										22410

Sr. No.	HP	Stage	Bowl No.	Price of only Pumps				Price of Pumpsets			
				Redial Flow (K Type)		Mix Flow (Q Type)		Redial Flow (K Type)		Mix Flow (Q Type)	
				SS Bowl/ SS Impe	CI Bowl/ Nyl Impe	CI Bowl/ SS Impe	CI Bowl/ Nyl Imp	SS Bowl/ SS Impe	CI Bowl/ Nyl Imp	CI Bowl/ SS Impe	CI Bowl/ Nyl Imp
14	5.00	02	250	-	-	5830	4740	-	-	29850	28750
15	5.00	03	150	9400	7300	7270	5910	33410	31310	31290	29920
16	5.00	04	125	10800	8000	7880	6410	34820	32020	31900	30420
17	5.00	05	100	11950	8450	9180	7460	35970	32470	33200	31470
18	5.00	06	80	13140	8940	-	-	37160	32960	-	-
19	5.00	08	60	15260	9660	-	-	39280	33680	-	-
20	5.00	10	50	17930	10930	-	-	41940	34940	-	-
21	5.00 HP Motor only										24020



Save Trees
They will save you



The Power of Technology

V6 PUMPS & PUMPSETS PRICE

Sr. No.	HP	Stage	Bowl No.	Price of only Pumps				Price of Pumpsets			
				Redial Flow (K Type)		Mix Flow (Q Type)		Redial Flow (K Type)		Mix Flow (Q Type)	
				SS Bowl/ SS Impe	CI Bowl/ Nyl Impe	CI Bowl/ SS Impe	CI Bowl/ Nyl Imp	SS Bowl/ SS Impe	CI Bowl/ Nyl Imp	CI Bowl/ SS Impe	CI Bowl/ Nyl Imp
22	6.00	03	200	10980	8880	7420	6030	36680	34580	33110	31720
23	6.00	04	150	11050	8250	8780	7140	36750	33950	34480	32830
24	6.00	05	125	12380	8880	9180	7460	38080	34580	34880	33160
25	6.00	06	100	13460	9260	10480	8510	39160	34960	36170	34210
26	6.00	08	80	16060	10460	-	-	41750	36150	-	-
27	6.00	10	60	17960	10960	-	-	43660	36660	-	-
28	6.00	12	50	20590	12190	-	-	46290	37890	-	-
29	6.00 HP Motor only										25700

Sr. No.	HP	Stage	Bowl No.	Price of only Pumps				Price of Pumpsets			
				Redial Flow (K Type)		Mix Flow (Q Type)		Redial Flow (K Type)		Mix Flow (Q Type)	
				SS Bowl/ SS Impe	CI Bowl/ Nyl Impe	CI Bowl/ SS Impe	CI Bowl/ Nyl Imp	SS Bowl/ SS Impe	CI Bowl/ Nyl Imp	CI Bowl/ SS Impe	CI Bowl/ Nyl Imp
30	7.50	03	250	-	-	7420	6030	-	-	35650	34260
31	7.50	04	200	12740	9940	8960	7280	40980	38180	37200	35520
32	7.50	05	150	12670	9170	10300	8370	40910	37410	38530	36600
33	7.50	06	125	13970	9770	10510	8540	42200	38000	38750	36770
34	7.50	08	100	16420	10820	13100	10650	44650	39050	41340	38880
35	7.50	10	80	18940	11940	-	-	47170	40170	-	-
36	7.50	12	60	20660	12260	-	-	48900	40500	-	-
37	7.50	15	50	24620	14120	-	-	52860	42360	-	-
38	7.50 HP Motor only										28230

Sr. No.	HP	Stage	Bowl No.	Price of only Pumps				Price of Pumpsets			
				Redial Flow (K Type)		Mix Flow (Q Type)		Redial Flow (K Type)		Mix Flow (Q Type)	
				SS Bowl/ SS Impe	CI Bowl/ Nyl Impe	CI Bowl/ SS Impe	CI Bowl/ Nyl Imp	SS Bowl/ SS Impe	CI Bowl/ Nyl Imp	CI Bowl/ SS Impe	CI Bowl/ Nyl Imp
39	10.0	04	250	-	-	8960	7280	-	-	40450	38770
40	10.0	05	200	14540	11040	10510	8540	46030	42530	42000	40030
41	10.0	07	150	15980	11080	13250	10760	47470	42570	44740	42250
42	10.0	08	125	17140	11540	13140	10680	48620	43020	44630	42160
43	10.0	10	100	19400	12400	15660	12720	50890	43890	47150	44210
44	10.0	12	80	21850	13450	-	-	53340	44940	-	-
45	10.0	16	60	26060	14860	-	-	57550	46350	-	-
46	10.0	20	50	31360	17360	-	-	62840	48840	-	-
47	10.0 HP Motor only										31490

Every part of the world is green,
If every heart of the human is green



The Power of Technology

V6 PUMPS & PUMPSETS PRICE

				Price of only Pumps				Price of Pumpsets			
				Redial Flow (K Type)		Mix Flow (Q Type)		Redial Flow (K Type)		Mix Flow (Q Type)	
Sr. No.	HP	Stage	Bowl No.	SS Bowl/ SS Impe	CI Bowl/ Nyl Impe	CI Bowl/ SS Impe	CI Bowl/ Nyl Imp	SS Bowl/ SS Impe	CI Bowl/ Nyl Imp	CI Bowl/ SS Impe	CI Bowl/ Nyl Imp
48	12.5	05	250	-	-	10510	8540	-	-	46270	44290
49	12.5	06	200	16270	12070	12060	9800	52030	47830	47810	45550
50	12.5	08	150	17600	12000	14720	11960	53360	47760	50480	47720
51	12.5	10	125	20300	13300	15730	12780	56060	49060	51490	48540
52	12.5	12	100	22390	13990	18250	14830	58150	49750	54010	50580
53	12.5	15	80	26210	15710	-	-	61960	51460	-	-
54	12.5	20	60	31460	17460	-	-	67220	53220	-	-
55	12.5	25	50	38050	20550	-	-	73810	56310	-	-
56	12.5 HP Motor only										35750

				Price of only Pumps				Price of Pumpsets			
				Redial Flow (K Type)		Mix Flow (Q Type)		Redial Flow (K Type)		Mix Flow (Q Type)	
Sr. No.	HP	Stage	Bowl No.	SS Bowl/ SS Impe	CI Bowl/ Nyl Impe	CI Bowl/ SS Impe	CI Bowl/ Nyl Imp	SS Bowl/ SS Impe	CI Bowl/ Nyl Imp	CI Bowl/ SS Impe	CI Bowl/ Nyl Imp
57	15.0	06	250	-	-	12060	9800	-	-	51210	48950
58	15.0	08	200	19840	14240	15080	12260	58990	53390	54240	51410
59	15.0	10	150	20880	13880	17750	14420	60030	53030	56900	53570
60	15.0	12	125	23470	15070	18360	14920	62620	54220	57510	54070
61	15.0	15	100	26890	16390	22180	18020	66040	55540	61330	57170
62	15.0	18	80	30530	17930	-	-	69680	57080	-	-
63	15.0	24	60	36830	20030	-	-	75980	59180	-	-
64	15.0 HP Motor only										39150

				Price of only Pumps				Price of Pumpsets			
				Redial Flow (K Type)		Mix Flow (Q Type)		Redial Flow (K Type)		Mix Flow (Q Type)	
Sr. No.	HP	Stage	Bowl No.	SS Bowl/ SS Impe	CI Bowl/ Nyl Impe	CI Bowl/ SS Impe	CI Bowl/ Nyl Imp	SS Bowl/ SS Impe	CI Bowl/ Nyl Imp	CI Bowl/ SS Impe	CI Bowl/ Nyl Imp
65	17.5	07	250	-	-	13540	11000	-	-	56450	53910
66	17.5	09	200	21600	15300	16630	13510	64510	58210	59540	56420
67	17.5	12	150	24160	15756	20700	16820	67070	58670	63610	59730
68	17.5	14	125	26640	16840	20990	17050	69550	59750	63900	59960
69	17.5	18	100	31320	18720	-	-	74230	61630	-	-
70	17.5	22	80	36320	20924	-	-	79230	63830	-	-
71	17.5 HP Motor only										42910





The Power of Technology

V6 PUMPS & PUMPSETS PRICE

Sr. No.	HP	Stage	Bowl No.	Price of only Pumps				Price of Pumpsets			
				Redial Flow (K Type)		Mix Flow (Q Type)		Redial Flow (K Type)		Mix Flow (Q Type)	
				SS Bowl/ SS Impe	CI Bowl/ Nyl Impe	CI Bowl/ SS Impe	CI Bowl/ Nyl Imp	SS Bowl/ SS Impe	CI Bowl/ Nyl Imp	CI Bowl/ SS Impe	CI Bowl/ Nyl Imp
72	20.0	08	250	-	-	15080	12260	-	-	62320	59490
73	20.0	10	200	23400	16400	18180	14770	70630	63630	65410	62010
74	20.0	13	150	25780	16680	22280	18110	73010	63910	69520	65340
75	20.0	16	125	29810	18610	23620	19190	77040	65840	70850	66420
76	20.0	20	100	34340	20340	-	-	81580	67580	-	-
77	20.0	25	80	40680	23180	-	-	87910	70410	-	-
78	20.0 HP Motor only										47230

Sr. No.	HP	Stage	Bowl No.	Price of only Pumps				Price of Pumpsets			
				Redial Flow (K Type)		Mix Flow (Q Type)		Redial Flow (K Type)		Mix Flow (Q Type)	
				SS Bowl/ SS Impe	CI Bowl/ Nyl Impe	CI Bowl/ SS Impe	CI Bowl/ Nyl Imp	SS Bowl/ SS Impe	CI Bowl/ Nyl Imp	CI Bowl/ SS Impe	CI Bowl/ Nyl Imp
79	22.5	9	250	-	-	16600	13480	-	-	67630	64520
80	22.5	11	200	25160	17460	19760	16060	76200	68500	70800	67090
81	22.5	15	150	29360	18860	25450	20680	80400	69900	76490	71710
82	22.5	18	125	32980	202380	-	-	84010	71410	-	-
83	22.5	22	100	38090	22690	-	-	89120	73720	-	-
84	22.5 HP Motor only										51040

Sr. No.	HP	Stage	Bowl No.	Price of only Pumps				Price of Pumpsets			
				Redial Flow (K Type)		Mix Flow (Q Type)		Redial Flow (K Type)		Mix Flow (Q Type)	
				SS Bowl/ SS Impe	CI Bowl/ Nyl Impe	CI Bowl/ SS Impe	CI Bowl/ Nyl Imp	SS Bowl/ SS Impe	CI Bowl/ Nyl Imp	CI Bowl/ SS Impe	CI Bowl/ Nyl Imp
85	25.0	10	250	-	-	18180	14770	-	-	72590	69180
86	25.0	12	200	26930	18530	21240	17260	81340	72940	75650	71670
87	25.0	17	150	32950	21050	-	-	87360	75460	-	-
88	25.0	20	125	36140	22140	-	-	90560	76560	-	-
89	25.0	25	100	41830	24330	-	-	96240	78740	-	-
90	25.0 HP Motor only										54410



**Save Paper.
Save Trees.
Save the World.**

HORIZONTAL OPENWELL

APPLICATION

- Domestic and community water supply.
- Industrial and agriculture water supply.
- Drip irrigation, sprinkler and gardening.
- Landscaping, Fountains and service stations.
- Booster applications.

SAILENT FEATURES

- Corrosion resistant stainless steel body.
- Dynamically balanced rotor and other rotating parts for uniform clearance.
- Specially designed bearing to withstand axial thrust loads.
- High efficiency, low power consumption.
- Supporting bush in each bowl.

BASIC CONSTRUCTION

Sr.	Particulars	Materials
01	Motor Casing	Stainless steel - 202 Grade
02	Bushings	Leaded bronze LTB4 Grade
03	Motor shaft	Stainless Steel 410 & 431 Grade
04	Thrust Bearing	Stainless Steel / Carbon / Teflon / Fibre
05	Housing/Casing / T.B. Cover	Cast iron FG 200 Grade
06	Stamping	CRNGO/ CRC Prime
07	Screws / Studs / Bolts	Stainless Steel / MS
08	Impeller	Stainless steel / CI / Nory GNF2 Grade

Mini
OpenWell



OpenWell



HORIZONTAL SINGLE PHASE MINI OPENWELL

Sr. No.	Model No.	HP	Su x De Line	Head in Meters							
				6	9	12	15	18	21	24	27
01	HSO-52525	0.50	25x25	155	140	125	100	50	-	-	-
02	HSO-13225	1.00	32x25	225	200	185	160	130	100	60	-
03	HSO-14040	1.50	40x40	400	325	290	220	160	110	50	-
04	HSO-25050	2.00	50x50	450	420	400	380	300	210	140	100
05	HSO-36550	3.00	65x50	650	600	520	450	420	350	190	-

HORIZONTAL THREE PHASE MINI OPENWELL

Sr. No.	Model No.	HP	Su x De Line	Head in Meters								
				6	9	12	15	18	21	24	27	30
06	HTO-13225	1.00	32x25	225	200	185	160	130	100	60	-	-
07	HTO-14040	1.50	40x40	400	325	290	220	160	110	50	-	-
08	HTO-25050	2.00	50x50	450	420	400	380	300	210	140	100	-
09	HTO-36550	3.00	65x50	650	600	520	450	420	350	190	-	-
10	HTO-56550	5.00	65x50	730	700	650	610	550	475	400	290	120

HORIZONTAL THREE PHASE OPENWELL (HH - SERIES)

Sr. No.	Model No.	HP	Su x De Line	Head in Meters								
				18	21	24	27	30	33	36	39	42
11	HTO-36550	3.00	65x50	650	550	450	300	150	-	-	-	-
12	HTO-56550	5.00	65x50	880	840	750	680	450	250	-	-	-
13	HTO-66550	6.00	65x50	960	900	810	730	650	480	290	-	-
14	HTO-76565	7.50	65x50	1110	940	870	780	690	530	350	240	-
15	HTO-16565	10.0	65x50	1220	1150	1070	980	860	720	570	460	350

HORIZONTAL THREE PHASE OPENWELL (HF - SERIES)

Sr. No.	Model No.	HP	Su x De Line	Head in Meters								
				12	15	18	21	24	27	30	33	36
16	HTO-36565	3.00	65x65	925	550	450	300	150	-	-	-	-
17	HTO-56565	5.00	65x65	1120	840	750	680	450	250	-	-	-
18	HTO-66565	6.00	65x65	1230	900	810	730	650	480	290	-	-
19	HTO-78080	7.50	80x80	1340	940	870	780	690	530	350	240	-
20	HTO-18080	10.0	80x80	1390	1150	1070	980	860	720	570	460	350



CABLE SELECTION CHART FOR SINGLE PHASE (220 VOLT)

HP	Rated Current (AMPS)	Cable Size in Sq.mm.							
		1.5	2.5	4.0	6.0	10.0	16.0	25.0	35.0
0.50	4.75	120	200	320	480	810	1260	1900	2590
0.75	6.00	80	130	250	320	550	850	1290	1760
1.00	7.25	60	100	170	250	430	670	1010	1380
1.50	9.50	40	70	120	180	300	470	710	980
2.00	11.5	-	60	90	130	230	360	550	760
3.00	14.5	-	40	60	100	170	280	430	600

CABLE SELECTION CHART FOR THREE PHASE (415 VOLT)

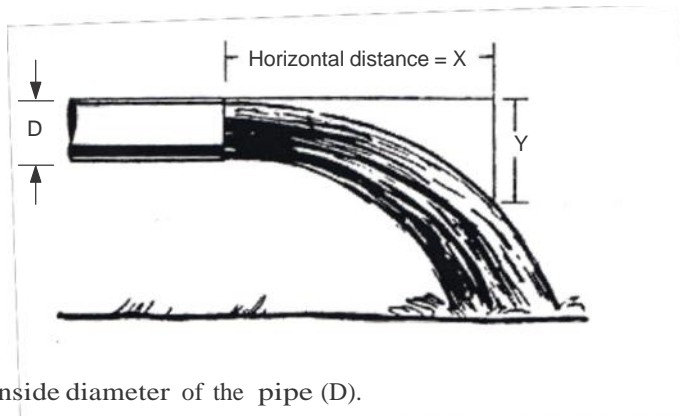
HP	Rated Current (AMPS)	Cable Size in Sq.mm.								
		1.5	2.5	4.0	6.0	10.0	16.0	25.0	35.0	50.0
1.00	2.50	380	630	1020	1520	2590	-	-	-	-
1.50	3.00	300	500	810	1210	2060	-	-	-	-
2.00	3.75	220	370	590	880	1500	2340	-	-	-
3.00	5.50	150	250	400	600	1030	1600	2440	-	-
4.00	6.50	110	190	310	460	790	1230	1880	2590	-
5.00	7.50	90	150	240	370	630	980	1490	2050	-
6.00	10.0	70	130	220	320	550	860	1310	1790	2510
7.50	12.0	60	110	170	260	440	690	1060	1450	2030
10.0	16.0	-	80	130	200	340	530	810	1110	1560
12.5	20.0	-	-	110	160	280	440	670	920	1310
15.0	24.0	-	-	90	130	230	360	550	750	1060
17.5	28.0	-	-	-	110	200	310	480	650	920
20.0	32.0	-	-	-	100	180	270	410	570	800
22.5	36.0	-	-	-	90	160	240	370	510	710
25.0	40.0	-	-	-	80	140	210	330	450	630

For other voltage cable length use this equation = (Actual Voltage x Length) / Rated Volt.

TERMS AND CONDITIONS

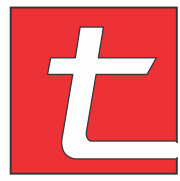
- This Price List cancels previous Price List
- Taxes will be charged extra as applicable.
- Rates are FO.R. Rajkot (Gujarat)
- Goods once sold will be not taken back or exchanged under any circumstances
- Payment against delivery of documents through any Nationalized Bank.
- For out state sale CST will be charged against "C" Form.
- Warranty is valid only for 12 months against manufacturing defect from date of invoice & dose not cover electrical components including motor winding and capacitors.
- We are not providing any warranty for the defect by sandy water.
- Subject to Rajkot Jurisdiction only.

HORIZONTAL OPEN PIPE WATER FLOW MEASUREMENT METHOD



- Measure the inside diameter of the pipe (D).
- Measure the distance of stream travels (x) parallel to the vertical drop of (Y) * here its 9 inch.

Nominal Pipe ID	Measured Distance X with a Vertical Drop of 9 Inches													
	4	6	8	10	12	14	16	18	20	22	24	26	28	30
1	26	39	51	64	77	91	103	116	129	142	155	168	181	193
1 ^{1/4}	44	67	89	111	132	154	177	198	222	243	256	287	309	331
1 ^{1/2}	60	91	120	151	177	211	241	271	301	331	360	390	421	451
2	100	150	200	254	300	350	390	449	504	554	604	654	704	754
2 ^{1/2}	141	213	281	354	427	495	568	636	708	781	849	922	990	1062
3	222	331	445	554	667	776	885	999	1108	1221	1330	1444	1553	1666
4	377	568	754	944	1135	1321	1512	1698	1889	2075	2265	2456	2642	2833
5	590	885	1180	1476	1735	2012	2312	2679	2996	3541	3836	4290	4597	
6	863	1298	1725	2157	2588	3019	3450	3882	4313	4767	5176	5607	6178	6619



TECSON
PUMPS

The Power of Technology



PARIN PUMPS

Plot No. D/21, Survey No. 18,
Rameshwar Ind. Area, Gondal Road,
Vavdi. Rajkot – 360 004

Contact

Ph: 0281 - 2920820

email: info@parinpumps.com

www.parinpumps.com